

SBI PO Prelims 2018 Memory Based (Solutions)

REASONING ABILITY

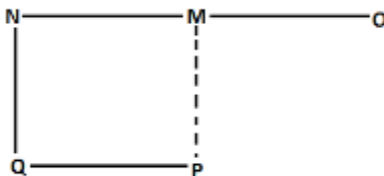
Directions (1-4):

Person	Country
A	S
B	Q
C	T
D	W
E	P
F	V
G	R
H	U

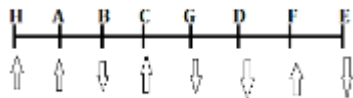
- (d);
- (b);
- (e);
- (a);
- (b); Seeking is coded as 'ki'.
- (c); From Statement I From Statement II



- (a); From Statement I



Direction (8-12):



- (a);
- (e);
- (a);
- (c);
- (e);

**BANK PRIME
2019**

Useful For SBI PO | Clerk | IBPS RRB
IBPS PO | Clerk | RBI | BOB & Others Exams

800+ TOTAL TESTS
Video Solution Available for Selected Mocks

Price @1199/-

BILINGUAL | Validity 15 Months

Direction (13-17):

Coming/from	689/384
the	543
village	721
innocent	962
people	827
Heat/for	235/475

13. (a);

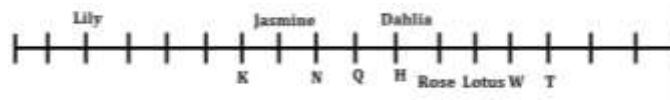
14. (b);

15. (c);

16. (d);

17. (a);

Direction (18-22):



18. (b);

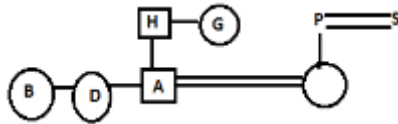
19. (c);

20. (a);

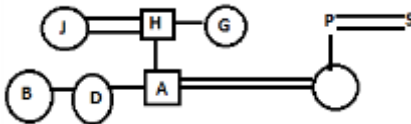
21. (b);

22. (b);

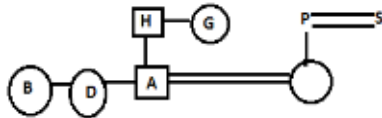
23. (d);



24. (c);



25. (b);



Direction (26-30):

Floors	Flat-1	Flat-2
5	J	G
4	A	D
3	H	I
2	E	B
1	C	F

26. (c);
 27. (d);
 28. (b);
 29. (c);
 30. (a);
 31. (b);JP-112
 32. (b);



33. (c); 8541

Direction (34-35):

$E > F > B(132) > C > D > A(69)$

34. (a);
 35. (d);

QUANTITATIVE APTITUDE

36. (c); Required difference = $25 + 75 - 45 - 50$

$$= 5$$

37. (a); Total number of pens sold on Saturday = $30 \times 1.4 = 42$

Total number of pens sold on Friday and Saturday together = $50 + 42 = 92$

38. (d); Total number of pens sold on Sunday

$$= \frac{75}{125} \times 100 = 60$$

39. (b); Blue ink pen sold on Thursday = $45 \times \frac{20}{100}$

$$= 9$$

Red ink pen sold on Thursday

$$= (45 - 9) \times \frac{25}{100} = 9$$

Black ink pen sold on Thursday

$$= (45 - 9) \times \frac{75}{100} = 27$$

Total number of blue and black ink pen sold on Thursday

$$= 9 + 27 = 36$$

40. (e); Total number of non-defective pens sold on Tuesday = $\frac{75}{15} \times 8 = 40$

41. (c); Quantity I. $x^2 + x - 6 = 0$

$$x^2 + 3x - 2x - 6 = 0$$

$$x(x + 3) - 2(x + 3) = 0$$

$$(x + 3)(x - 2) = 0$$

$$x = -3, 2$$

Quantity II. $y^2 + 7y + 12 = 0$

$$y^2 + 4y + 3y + 12 = 0$$

$$(y + 4)(y + 3) = 0$$

$$y = -4, -3$$

Quantity I \geq Quantity II

BANK PRIME 2019

Useful For SBI PO | Clerk | IBPS RRB
 IBPS PO | Clerk | RBI | BOB & Others Exams

800+ TOTAL TESTS

Video Solution Available for Selected Mocks

Price @999/-

BILINGUAL | Validity 9 Months

42. (b); A's efficiency = 5

B's efficiency = 4

Let total work = 60

Quantity I : A can do $\frac{5}{6}$ of work in $\rightarrow \frac{50}{5} = 10$ d

Quantity II : B can do $\frac{4}{5}$ of work in $\rightarrow \frac{48}{4}$
= 12 d

Quantity II > Quantity I

43. (a); Let numbers be $x, x+2, x+4, x+6, x+8, x+10, x+12, x+14$

Quantity I $\rightarrow x+2 + x+14 = 2x+16$

Quantity II $\rightarrow x+4 + x+10 = 2x+14$

Quantity I > Quantity II

44. (b); SP = 1500

Let, MP = x

Quantity I = 550

Quantity II :

$$x \times \frac{7}{8} = 1500$$

$$x = \frac{1500 \times 8}{7}$$

$$x = \frac{12000}{7}$$

Quantity II > Quantity I

45. (e); Quantity I :

Let speed of current = x

speed of boat = $x + 5x$

downstream speed = $7x$

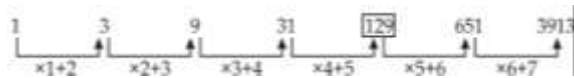
$$\frac{63}{7x} = 3$$

$$x = 3$$

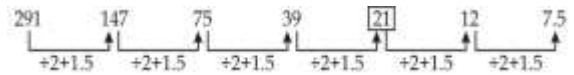
Upstream speed = $6x - x = 5x = 15$ km/hr

Quantity I = Quantity II

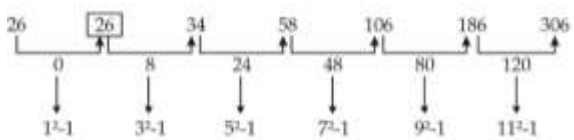
46. (c);



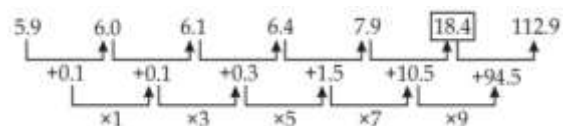
47. (a);



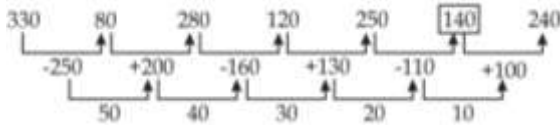
48. (e);



49. (d);



50. (b);



51. (d); Volume of cylinder (s) = $\pi r^2 h$

(r → radius)

(h → height)

Volume of cone (c) = $\frac{1}{3} \pi R^2 H$

(R → radius)

(H → height)

h = H = 10 cm

ATQ,

$$\pi r^2 h + \frac{1}{3} \pi R^2 h = 2190\pi$$

$$\pi \times 10 \left[r^2 + \frac{1}{3} \times 15 \times 15 \right] = 2190\pi$$

$$r = 12$$

$$\therefore \frac{r}{R} = \frac{12}{15} = 4 : 5$$

52. (c); Atq,

$$\frac{X}{X+16} = \frac{1}{3}$$

$$3X = X + 16$$

$$X = 8$$

$$\therefore \text{sum of red \& blue balls} = 8 + 6 = 14$$

53. (a); Let present age of A be x yrs
& present age of B be y yrs.

ATQ,

$$x + y = 88 + 12$$

$$x + y = 100 \quad \dots (i)$$

$$x - 18 = y - 6$$

$$x - y = 12 \quad \dots (ii)$$

solving (i) & (ii)

$$x = 56$$

$$\therefore \text{age of A 2 year hence} = 58 \text{ yrs}$$

54. (b); Let speed of train A be S

$$S \times 18 = 360$$

$$S = 20 \text{ m/s}$$

$$A : B = 4 : 5$$

$$A : B = 4 : 5$$

$$\text{Speed of B} = 25 \text{ m/s}$$

$$\text{Length of train B} = 25 \times 12 = 300 \text{ m}$$

55. (b); Total numbers of ways → 7!

Favorable numbers of ways → 5! × 3!

$$\text{Probability} \rightarrow \frac{5! \times 3!}{7!} = \frac{1}{7}$$

56. (d); $2^7 = 32.01 \div 128.01 \times 1023.99 \div 7.99$

$$2^7 \approx \frac{32}{128} \times \frac{1024}{8}$$

$$2^7 \approx 32$$

$$2^7 \approx 2^5$$

$$? \approx 5$$



SBI PRIME 2019

(PO+CLERK)

with Video Solutions

175 + TOTAL TESTS

- 60** Full Length Mocks
- 15+** Previous Years Papers
- 60** Section Wise Sets
- 40** Topic Wise sets | eBooks

57. (a); $\frac{339.99}{?} = \sqrt{143.99} + \sqrt{64.01}$
 $\frac{340}{?} \approx \sqrt{144} + \sqrt{64}$
 $\frac{340}{?} \approx 12 + 8$
 $\frac{340}{?} \approx ?$
 $\frac{340}{20} \approx ?$
 $17 \approx ?$

58. (e); $34.02\% \text{ of } 550.09 \div ? = 297.07 \div \sqrt{728.95}$
 $\frac{34 \times 550}{100} \div ? \approx 297 \div \sqrt{729}$
 $\frac{187}{?} \approx \frac{297}{27}$
 $? \approx 17$

59. (a); $(? \div 9.97) \times 12.08 \approx 20.12\% \text{ of } 1319.97$
 $(? \div 10) \times 12 \approx \frac{20 \times 1320}{100}$
 $? \approx \frac{264}{12} \times 10 \approx 220$

60. (d); $? \% \text{ of } 179.99 = \sqrt{(24.02)^2 + (17.98)^2} + 60.01\% \text{ of } 659.98$
 $? \% \text{ of } 180 \approx \sqrt{(24)^2 + (18)^2} + 60\% \text{ of } 660$
 $\frac{?}{100} \times 180 \approx \sqrt{576 + 324} + 396$
 $\frac{?}{100} \times 180 \approx \sqrt{1296}$
 $? \approx \frac{36}{180} \times 100 \Rightarrow ? \approx 20$

61. (c); Total number of workers in company A and C together
 $= 900 \times \frac{32}{100} + 900 \times \frac{24}{100}$
 $= 288 + 216 = 504$
 Total number of officers in company A and C together
 $= 900 \times \frac{32}{100} \times \frac{1}{16} + 900 \times \frac{24}{100} \times \frac{1}{12}$
 $= 18 + 18 = 36$
 Required Ratio $= \frac{504}{36} = \frac{14}{1}$

62. (e); Total number of employees in company B
 $= 900 \times \frac{44}{100} \times \frac{19}{18} = 418$
 Total number of employees in company C
 $= 900 \times \frac{24}{100} \times \frac{13}{12} = 234$
 Required difference $= 418 - 234 = 184$

63. (a); Total number of officers in Company 'A'
 $= 900 \times \frac{32}{100} \times \frac{1}{16} = 18$
 Total number of officers in Company 'B'
 $= 900 \times \frac{44}{100} \times \frac{1}{18} = 22$
 Required difference $= 22 - 18 = 4$

64. (b); Total number of officers in company C
 $= 900 \times \frac{24}{100} \times \frac{1}{12} = 18$
 Total number of workers in company C
 $= 900 \times \frac{24}{100} = 216$
 Total number of employees in company D
 $= 216 \times 1.25 + 18 \times 1.5 = 270 + 27 = 297$

65. (d); Required difference $= \frac{900}{100} \times (44 + 24 - 32) = 9 \times 36 = 324$

MAHA COMBO PRIME
BANK | INSURANCE
SSC | RAILWAY

2100+ TOTAL TESTS

- ✓ 800 + Total Tests for Bank
- ✓ 150 + Total Tests for Insurance
- ✓ 850 + Total Tests for SSC
- ✓ 300 + Total Tests for Railway

Price @1999/- | Validity 12 Months

Solution (66-70):

Ratio of profit share of A, B and C is scheme S₁

$$80000 \times 2 : 30000 \times 3 : 50000 \times 5$$

$$16 : 9 : 25$$

$$\text{Profit share of A from Scheme } S_1 = \frac{16}{50} \times 200,000$$

$$= 64000$$

$$\text{Profit share of B from scheme } S_1 = \frac{9}{50} \times 200,000$$

$$= 36000$$

$$\text{Profit share of C from scheme } S_1 = \frac{25}{50} \times 20,000$$

$$= 100,000$$

Ratio of profit share of A and C in scheme S₂

$$30,000 \times 4 : 10,000 \times 3$$

$$12 : 3$$

$$\text{Profit share of A in scheme } S_2 = \frac{12}{15} \times 90000$$

$$= 72000$$

$$\text{Profit share of C in scheme } S_2 = \frac{3}{15} \times 90,000$$

66. (d); Required ratio

$$= (36000 + 10000) : 100,000$$

$$= 46 : 100 = 23 : 50$$

67. (e); Required % = $\frac{64000}{18000} \times 100 = \frac{3200}{9}\%$

$$= 355\frac{5}{9}\%$$

68. (a); Total investment of A = 80,000 + 30,000 = 110,000

$$\text{Total profit of A} = 64000 + 72000 = 136000$$

Equivalent rate of Interest for 2 year at CI

$$= 20\% + 20\% + \frac{20 \times 20}{100} = 44\%$$

$$\text{Required CI} = \frac{44}{100} (136000 + 110000)$$

$$= 108240$$

69. (a); Required average = $\frac{64000+18000}{2} = 41000$

70. (c); $\frac{80000 \times R \times 3}{100} - 30000 \times \left(\frac{R+5}{100}\right) = 30,000$

$$2400R - 300R - 1500 = 30000$$

$$8R - R - 5 = 100$$

$$7R = 105$$

$$R = 15\%$$

Be a Banker with Bank
PRIME
BANK
PRIME
TEST SERIES
Offer Price ₹999
800+ Tests
BUY NOW

- 71. (d);**The most appropriate phrase to replace the phrase given in bold is “is very different from”. In the given sentence, ‘than’ should be replaced with ‘from’ because ‘different’ is followed by ‘from’. Also keep in mind that, ‘than’ is used after ‘different’, but only in the cases where ‘different’ is followed by a noun. For example, I read a different novel than this. Since option (d) is in the precise grammatical syntax, it becomes the most suitable answer choice.
- 72. (b);**The most appropriate phrase to replace the phrase given in bold is “statistics with regard to”. It is to be noted that ‘Statistics’, when used as a subject, always takes a singular verb. For example, Statistics is not an easy subject. But, whenever ‘statistics’ denotes some statistical facts or data, the very following it is always plural, which is the case here. Since option (b) is in the precise grammatical syntax, it becomes the most suitable answer choice.
- 73. (e);**The phrase given in sentence is grammatically correct and does not require any replacement. Hence, option (e) i.e. “No replacement required” is the correct answer.
- 74. (c);**The most appropriate phrase to replace the phrase given in bold is “I smelled”. It is to be noted that after ‘As soon as, As long as, So long as’, we don’t use ‘than/then’. Since option (c) is in the precise grammatical syntax, it becomes the most suitable answer choice.
- 75. (a);**The most appropriate phrase to replace the phrase given in bold is “he was able”. It is to be noted that ‘Although/Though’ is followed by ‘yet’ and not ‘but/and/or/else’. And in writing, many a times, ‘yet’ is replaced by a ‘comma’, which is the case here. Since option (a) is in the precise grammatical syntax, it becomes the most suitable answer choice.
- 76. (c);**The most appropriate phrase to replace the phrase given in bold is “denied that they are”. It is to be noted that ‘not’ will not be used after ‘deny’ because deny already means refuse to admit. Since option (c) is in the precise grammatical syntax, it becomes the most suitable answer choice.
- 77. (b);**The most appropriate phrase to replace the phrase given in bold is “who did not love”. It is to be noted that after ‘did’ we always use the first form of the verb i.e. V1. Since option (b) is in the precise grammatical syntax, it becomes the most suitable answer choice.
- 78. (d);**The most appropriate phrase to replace the phrase given in bold is “is exceptionally”. It is to be noted that ‘good’ is an adjective, so ‘exceptional’ should be replaced by ‘exceptionally’. ‘Exceptional’ is itself an adjective and we all know that an adjective never defines another adjective, but an adverb does. Since option (d) is in the precise grammatical syntax, it becomes the most suitable answer choice.
- 79. (a);**(i) When we see ourselves repeating our ordinary routine, we realize how much wealth surrounds our life.
- 80. (e);**(i) As there is a growing influence of the Indian Diaspora on Capitol Hill, Trump will certainly see the advantages of doing business with India.
(ii) The growing influence of the Indian Diaspora on Capitol Hill will certainly allow Trump to see the advantages of doing business with India.
(iii) With the growing influence of the Indian Diaspora on Capitol Hill, Trump will certainly see the advantages of doing business with India.
- 81. (c);**(i) As there was no democracy in British India, the rulers could take bold decisions fearlessly without bothering about repercussions.
(ii) Since there was no democracy in British India, the rulers could take bold decisions fearlessly without bothering about repercussions.

82. **(b)**; Option (b) is correct because while indicates a contrast and because of the given requirement of the statement it cannot start the sentence.
83. **(d)**; Both (i) and (ii) are correct
 (i) To further explore the causes and effects of global warming , scientists build climate models—computer simulations of the climate system.
 (ii) Scientists are building climate models— computer simulations of the climate system to further explore the causes and effects of global warming and to predict future warming.
84. **(c)**; **BDCA**; (The apex court had ordered that the deadline be extended till the five-judge constitution bench delivers its judgment on petitions challenging the validity of the biometric scheme and the enabling law)
85. **(b)**; **DABC**; (Repealing the law that safeguards the indigenous people would open the floodgates of poaching and it would lead to marginalisation of the indigenous people)
86. **(d)**; **CADB**; (My thoughts are with the families of those who have lost their loved ones in this unfortunate accident. I pray for the speedy recovery of the injured)
87. **(b)**; **BCDA**; (Several people became leaders and Ministers after that rally but the people belonging to the community remained where they were)
88. **(a)**; **ADCB**; (He also directed the department to develop the new schools as model institutions and engage modern construction technology for early completion of construction work)
89. **(c)**; Option (c) **BDCA** is the correct choice for the given question
 The U.S. is a nation of immigrants and owes its predominant position in the present global order to its being an open society.
90. **(e)**; Unknown: not known or familiar.
 Uncanny: strange or mysterious
91. **(d)**; The most appropriate title for the passage above is “Is Consumption necessary for economic Growth?”
92. **(c)**; The meaning of the line above is that consumer preferences control the economy but savings and investment are the push to drive it forward. Hence option c is the correct choice here.
93. **(e)**; Both statements (a) and (b) are correct. Refer the following lines
 Option(a) :The systematic failure by Keynesian economists and pundits to distinguish between consuming and producing value is the single most damaging fallacy in popular economic thinking.
 Option(b) : Economic growth (booms) and declines (bust) have always been led by changes in business and durable goods investment, while final consumer goods spending has been relatively stable through the business cycle.
94. **(c)**; Option (c) is the correct choice. Refer last paragraph of the passage, “increased uncertainty can depress job growth even”
95. **(e)**; Option (e) is the correct choice
Analogy means a comparison between one thing and another, typically for the purpose of explanation or clarification.
Variance means the fact or quality of being different, divergent, or inconsistent.
96. **(b)**; Out of all the given options, only combination of sentences (a) and (F) makes a grammatically and contextually correct sentence. Hence, option (b) is the correct answer.



97. **(d)**; Out of all the given options, only combination of sentences (b) and (d) makes a grammatically and contextually correct sentence. Hence, option (d) is the correct answer.

98. **(a)**; Out of all the given options, only combination of sentences (c) and (e) makes a grammatically and contextually correct sentence. Hence, option (a) is the correct answer.

99. **(e)**; Out of all the given options, none of the combinations of sentences makes a grammatically and contextually correct sentence. Hence, option (e) is the correct answer.

100. **(c)**; Out of all the given options, combination of sentences (b) and (F) together as well as combination of sentences (c) and (d) together makes a grammatically and contextually correct sentence. Hence, option (c) is the correct answer.



Be a Banker with Bank
PRIME
△ BANK ○+
+ **PRIME**
○ TEST SERIES □
Offer Price ₹999
800+ Tests
BUY NOW