



adda247 publications

BOOKS


Visit: [publications.adda247.com](http://publications.adda247.com) & [store.adda247.com](http://store.adda247.com)  
For any information, mail us at [publications@adda247.com](mailto:publications@adda247.com)



## RRB CLERK PRE 2019 Memory Based

**Direction (41-44):** Find the wrong number in the following number series.

Q41. 1, 2, 5, 16, 65, 328, 1957

- (a) 5
- (b) 328
- (c) 16
- (d) 1957
- (e) 65

Q42. 4, 11, 25, 46, 74, 129, 151

- (a) 129
- (b) 11
- (c) 151
- (d) 4
- (e) 46

Q43. 84, 96, 83, 95, 80, 94, 81

- (a) 95
- (b) 81
- (c) 83
- (d) 80
- (e) 84

Q44. 3, 5, 8, 17, 33, 58, 94

- (a) 8
- (b) 94
- (c) 58
- (d) 3
- (e) 5

Q45. A boat covers 36 km in upstream in 2 hours and 66 km in downstream in 3 hours. Find the speed of boat in still water?

- (a) 21 km/h
- (b) 19 km/h
- (c) 20.5 km/h
- (d) 20 km/h
- (e) 19.5 km/h

Q46. Two inlet taps A and B can fill a tank in 36 minutes and 60 minutes respectively. Find the time taken by both the taps together to fill  $\frac{1}{6}$ th of the tank?

- (a) 3 minutes
- (b)  $3\frac{3}{4}$  minutes

(c)  $3\frac{1}{2}$  minutes

(d)  $3\frac{1}{3}$  minutes

(e)  $2\frac{1}{3}$  minutes

Q47. If circumference of first circle is 132 cm and circumference of second circle is 110 cm then find the difference between area of both the circle?

- (a) 423.5 cm<sup>2</sup>
- (b) 412.5 cm<sup>2</sup>
- (c) 420 cm<sup>2</sup>
- (d) 422.4 cm<sup>2</sup>
- (e) 419.8 cm<sup>2</sup>

Q48. In 64 liter of pure milk, 20 liter of water is mixed and then  $\frac{1}{4}$ th of the mixture is taken out. When x liter of water is added again then ratio of water to that of the milk becomes 1:2. Find value of x?

- (a) 10 liter
- (b) 8 liter
- (c) 12 liter
- (d) 6 liter
- (e) 9 liter

**BANK & INSURANCE  
2019**

**PREMIUM PACKAGE**

Mocks | Practice sets | eBooks

---

1000 Total Tests  
500 + eBooks

Validity: 12 Months | Bilingual

Q49. Total cost of x pens and (x-2) pencils is Rs 424. If one pencil and one pen costs Rs 4 and Rs 20 respectively then find x?

- (a) 16
- (b) 18
- (c) 15
- (d) 20

(e) 21

Q50. A is 6 years younger than B and ratio of present age of B to C is 12:5. If ratio of present age of A to C is 2:1 then find present age of B?

(a) 20 years

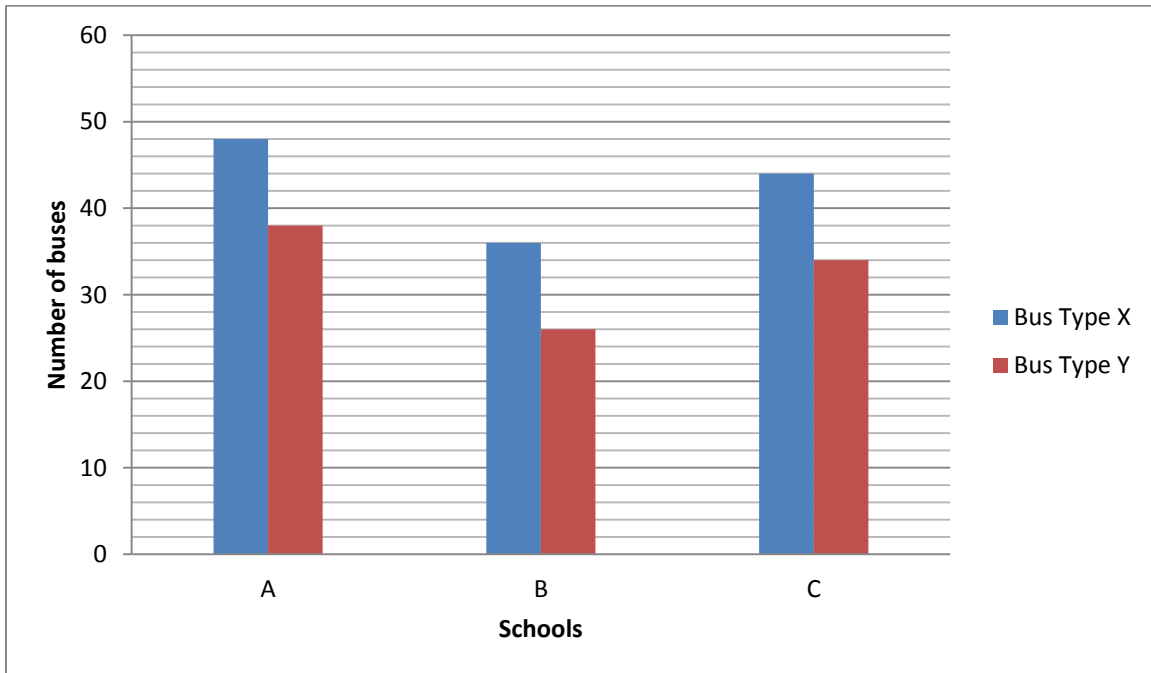
(b) 30 years

(c) 24 years

(d) 18 years

(e) None of these

**Directions (51-55):** Given bar graph shows the data of two types of school buses X and Y for three schools A, B and C. Study the chart carefully and answer the following questions.



Q51. What is the average number of X type buses from school B and school C together?

(a) 40

(b) 70

(c) 30

(d) 59

(e) 54

Q52. X type buses from school A are how much more than that of X type buses from school B?

(a)  $55\frac{5}{19}\%$

(b) 25%

(c)  $5\frac{5}{9}\%$

(d)  $45\frac{5}{6}\%$

(e)  $33\frac{1}{3}\%$

Q53. What is the average number of all the buses from school B?

(a) 43

(b) 39

(c) 31

(d) 54

(e) 59

Q54. What is the difference of average number of all buses from school A and average number of all buses from school C?

(a) 16

(b) 4

(c) 8

(d) 24

(e) 12



Q55. Which school has maximum number of buses?

(a) School B

(b) School C

(c) School A & School C



- (d) School A & School B  
(e) School A

**Directions (56-60):** Given below are two equations in each question, which you have to solve and give answer

- (a) if  $x > y$   
(b) if  $x \geq y$   
(c) if  $y > x$   
(d) if  $y \geq x$   
(e) if  $x = y$  or no relation can be established

Q56. I.  $2x^2 - 5x + 2 = 0$

II.  $2y^2 - 9y + 7 = 0$

Q57. I.  $3x^2 + 7x + 4 = 0$

II.  $y^2 + 9y + 20 = 0$

Q58. I.  $x^2 - 7x + 10 = 0$

II.  $y^2 - 14y + 45 = 0$

Q59. I.  $x^2 - 3x = 4$

II.  $y^2 + 6y + 8 = 0$

Q60. I.  $x^2 - 3x = 10$

II.  $y^2 + 7y + 10 = 0$

**Directions (61-65):** Following are the details of three shopkeepers and numbers of items sold by them on three different days

Shopkeepers	Monday	Tuesday	Wednesday
A	160	240	210
B	200	180	320
C	150	330	280

Q61. Find the ratio of items sold by A and B on Monday to items sold by B and C on Wednesday?

- (a) 5 : 3  
(b) 3 : 5  
(c) 3 : 4  
(d) 4 : 7  
(e) 5 : 8

Q62. Find the average number of items sold by all 3 shopkeepers on Wednesday?

- (a) 280  
(b) 290  
(c) 270  
(d) 250

(e) 260

Q63. Items sold by A and B together on Tuesday is what percentage of items sold by B and C on Wednesday?

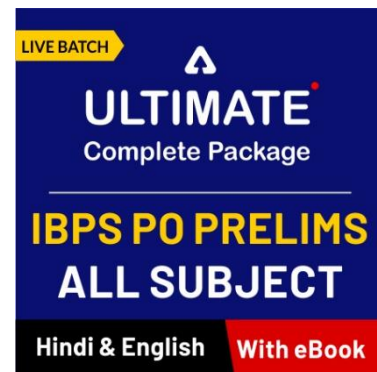
- (a) 70%  
(b) 75%  
(c) 60%  
(d) 65%  
(e) 80%

Q64. Find the difference of number of items sold by B on Monday and Tuesday together and items sold by A on Tuesday and Wednesday?

- (a) 80  
(b) 60  
(c) 50  
(d) 70  
(e) 100

Q65. Find the ratio of items sold by B on all 3 days together to the items sold by C on all 3 days?

- (a) 35 : 38  
(b) 38 : 35  
(c) 30 : 34  
(d) 30 : 38  
(e) 35 : 41



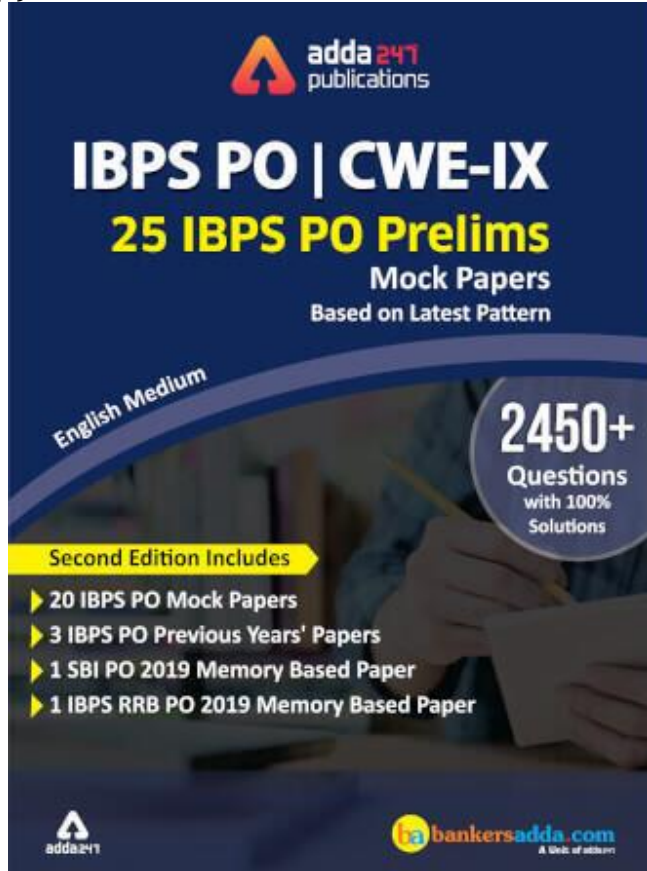
Q66. Marked price of an article is Rs 250 more than cost price of that article and it is sold at a discount of 15% on marked price. Find the cost price of the article if the profit percent earned is 27.5%?

- (a) Rs 600  
(b) Rs 550  
(c) Rs 500  
(d) Rs 750  
(e) Rs 900

Q67. In year 2016, ratio of boys to girls in a school is 36:19. And in year 2017, number of boys is increased by 1440 and number of girls is

increased by 15%. If in 2017, there were total increase in the number of students is 1725 then find the increased number of boys in the school.

- (a) 7240
- (b) 5440
- (c) 6040
- (d) 4440
- (e) 5040



Q68. If ratio of salary of A to that of B is 1:3 and each spends 15% of his salary on house rent. Find the house rent paid by A if remaining amount with A and B together is Rs 42500.

- (a) Rs 1800
- (b) Rs 1845
- (c) Rs 1785
- (d) Rs 1760
- (e) Rs 1875

Q69. A started a business by investing Rs. 50,000. After 6 months B joined him by investing Rs. 75,000. After another 6 months C joined with Rs. 1,25,000. What is the ratio of profit shared after 2 years among A, B and C?

- (a) 4 : 5 : 6
- (b) 8 : 9 : 10
- (c) 8 : 9 : 12
- (d) 4 : 5 : 8

(e) None of these

Q70. At what rate will a sum of Rs. 1000 amounts to Rs. 1102.50 in 2 years at compound interest?

- (a) 6.5%
- (b) 6%
- (c) 5%
- (d) 5.5%
- (e) None of these

**Directions (71-80):** What should come in place of question mark (?) in the following questions?

Q71.  $?^2 = 40\% \text{ of } \frac{5}{11} \text{ of } 352$

- (a) 12
- (b) 16
- (c) 6
- (d) 4
- (e) 8

Q72.  $?^2 = (\sqrt{1444} + \sqrt{676}) \div 4$

- (a) 6
- (b) 16
- (c) 8
- (d) 2
- (e) 4

Q73.  $\left(\frac{?-0.5}{0.2}\right) = \frac{120}{2}$

- (a) 30
- (b) 12.5
- (c) 25
- (d) 17.5
- (e) 22.5

Q74.  $60\% \text{ of } ? - \sqrt{324} = 222$

- (a) 600
- (b) 250
- (c) 200
- (d) 400
- (e) 350

Q75.  $\frac{2^3 \times 3^2}{(90 \div ?)} = \sqrt{64}$

- (a) 15
- (b) 12
- (c) 10
- (d) 11
- (e) 16

Q76.  $\sqrt{4 \times ?} = \frac{160}{10}$

- (a) 64
- (b) 60
- (c) 68
- (d) 56
- (e) 72

Q77.  $\sqrt{5929} + \sqrt{8464} = (?)^2$

- (a) 17

(b) 21

(c) 15

(d) 13

(e) 11

Q78.  $7\frac{1}{2} - 2\frac{1}{2} = \frac{50}{?}$

(a) 8

(b) 5

(c) 15

(d) 12

(e) 10

Q79.  $\left[ \left( 2 \times \frac{1}{4} \right) + 4 \right] \times 8 = ? \times 10$

(a) 4.8

(b) 3.6

(c) 2.4

(d) 3.2

(e) 4.2

Q80. 80% of  $(1.5 \times 4 + ?) = 24$

(a) 30

(b) 36

(c) 24

(d) 28

(e) 42

**adda247**  
publications

**50+**  
**BANK PO | CLERK 2016-19**  
**PREVIOUS YEARS' (MEMORY BASED) BOOK**

**Useful for SBI, IBPS, RRB, RBI**  
**And other Bank Exams**

**ENGLISH EDITION**  
**INCLUDES**  
PREVIOUS YEARS' SETS OF

**VERSION 2.0**

**5500+**  
**Questions**

**DETAILED SOLUTIONS OF**  
**ENGLISH | QUANT**  
**REASONING**

**SBI PO | Clerk: 14 Sets**

**IBPS PO | Clerk: 12 Sets**

**RRB PO | Clerk: 14 Sets**

**RBI Grade B | Assistant: 7 Sets**

**5 Papers of other Exams: BOB,**  
**Canara Bank, Syndicate**  
**Bank PO etc..**

**Exclusive**  
**500 Banking & Static**  
**Awareness Questions**

**adda247** **bankersadda.com**  
A TRUST OF BANKERS